

Church Road, London, NW10 9PY

£349,950 Leasehold



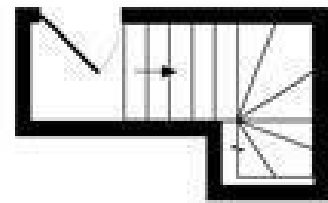
KEY FEATURES:

- 2 BEDROOM VICTORIAN CONVERSION FLAT
- Two double bedrooms
- Fitted kitchen
- Tiled bathroom
- Ideal buy to let investment
- EPC ~ D
- LEASEHOLD

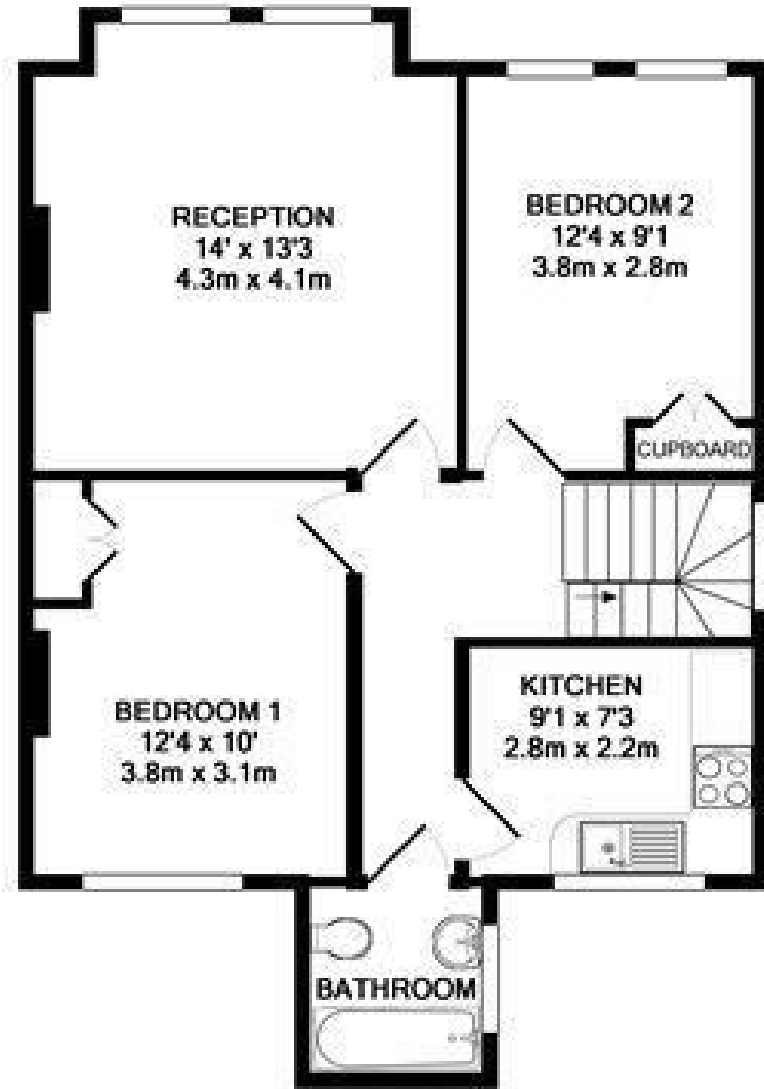
Ideal buy to let investment or first time buyer is this two double bedroom first floor Victorian conversion. Benefits include a fitted kitchen, fully tiled bathroom, fully double glazed. Located on this well regarded quiet cul-de-sac, within close proximity to local schools, shopping facilities including Tesco, amenities and bus routes on Church Road or Craven Park Road. Within walking distance to Harlesden (Bakerloo line, London Overground).

Whilst every effort is made to give a fair description, the accuracy of these particulars is not guaranteed, neither do they constitute an offer or contract.

MATHESONS ESTATE AGENTS have not tested any apparatus, equipment, fitting or services and so cannot verify that they are in working order. The buyer is advised to obtain verification from their solicitor or surveyor. Measurements are correct to within +/- 6 A sonic tape is used. None of the statements contained in these particulars or any of our properties are to be relied upon as a representation of fact.



ENTRANCE FLOOR
APPROX. FLOOR
AREA 38 SQ.FT.
(3.5 SQ.M.)



1ST FLOOR
APPROX. FLOOR
AREA 559 SQ.FT.
(51.9 SQ.M.)

TOTAL APPROX. FLOOR AREA 597 SQ.FT. (55.5 SQ.M.)

Whilst every attempt has been made to ensure the accuracy of the floor plan contained here, measurements of doors, windows, rooms and any other items are approximate and no responsibility is taken for any error, omission, or mis-statement. This plan is for illustrative purposes only and should be used as such by any prospective purchaser. The services, systems and appliances shown have not been tested and no guarantee as to their operability or efficiency can be given.
Made with Metropix ©2011

